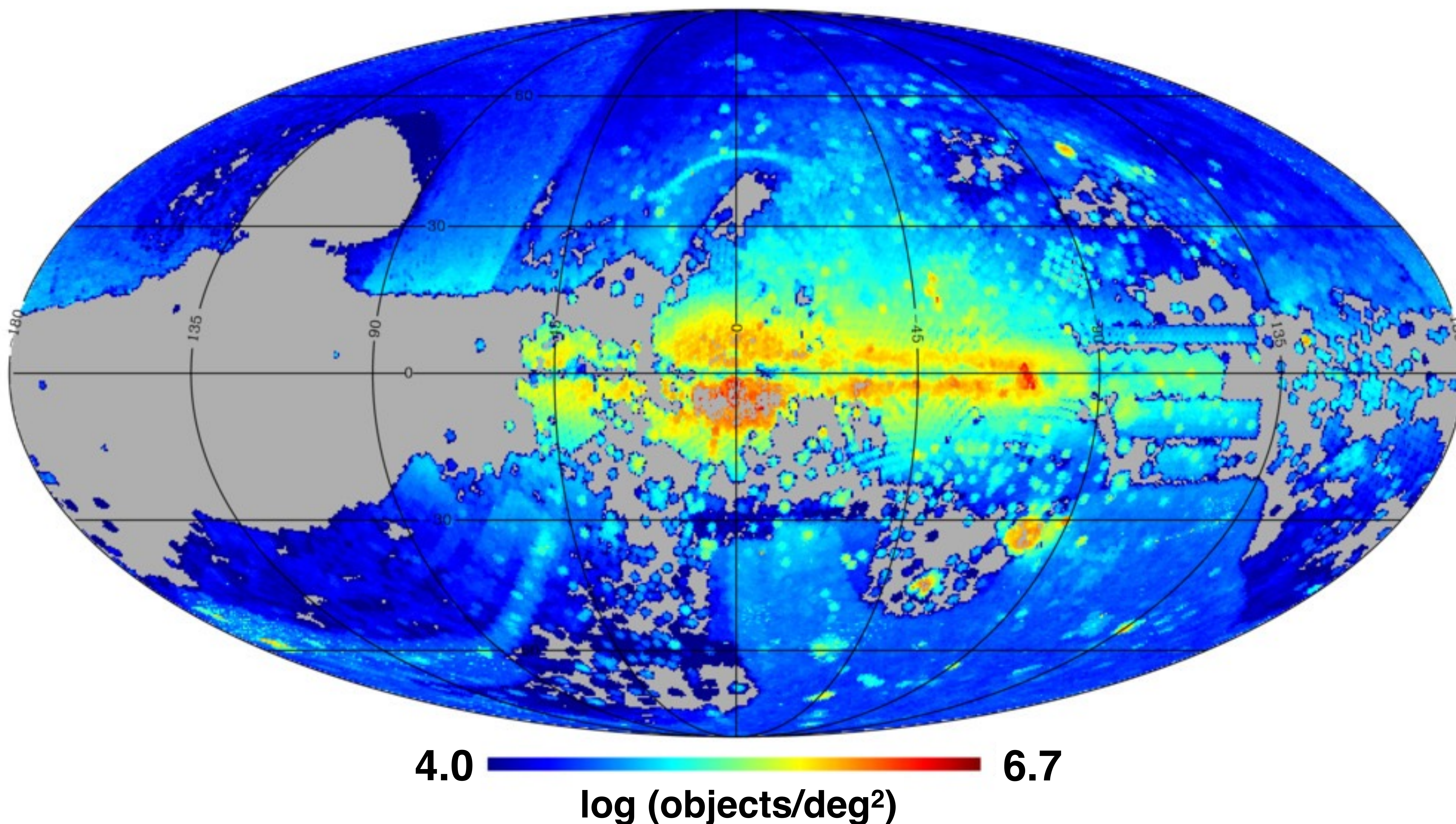


Cataloging the entire sky with NOAO Imaging Data

25,000 deg² — 2.5 billion objects — 20 billion measurements



- Depth: 22.3, 22.8, 22.6, 22.4, 21.7, 20.4 mag (ugrizY)
- Photometric calibration accuracy: ~2%
- Astrometric accuracy: ~20 milliarcsec
- Number of exposures: ~200,000
- Median number of exposures per area: ~15
- Data from DECam, Mosaic-3 and 90Prime
- Source Extractor aperture photometry
- Calibrated using Gaia/2MASS/APASS/Galex
- Object catalog contains:
 - average photometry and uncertainties
 - photometric variability
 - morphology parameters
 - proper motions

Coming soon: September 2017 data release!